



*The
Gospel of Mark*

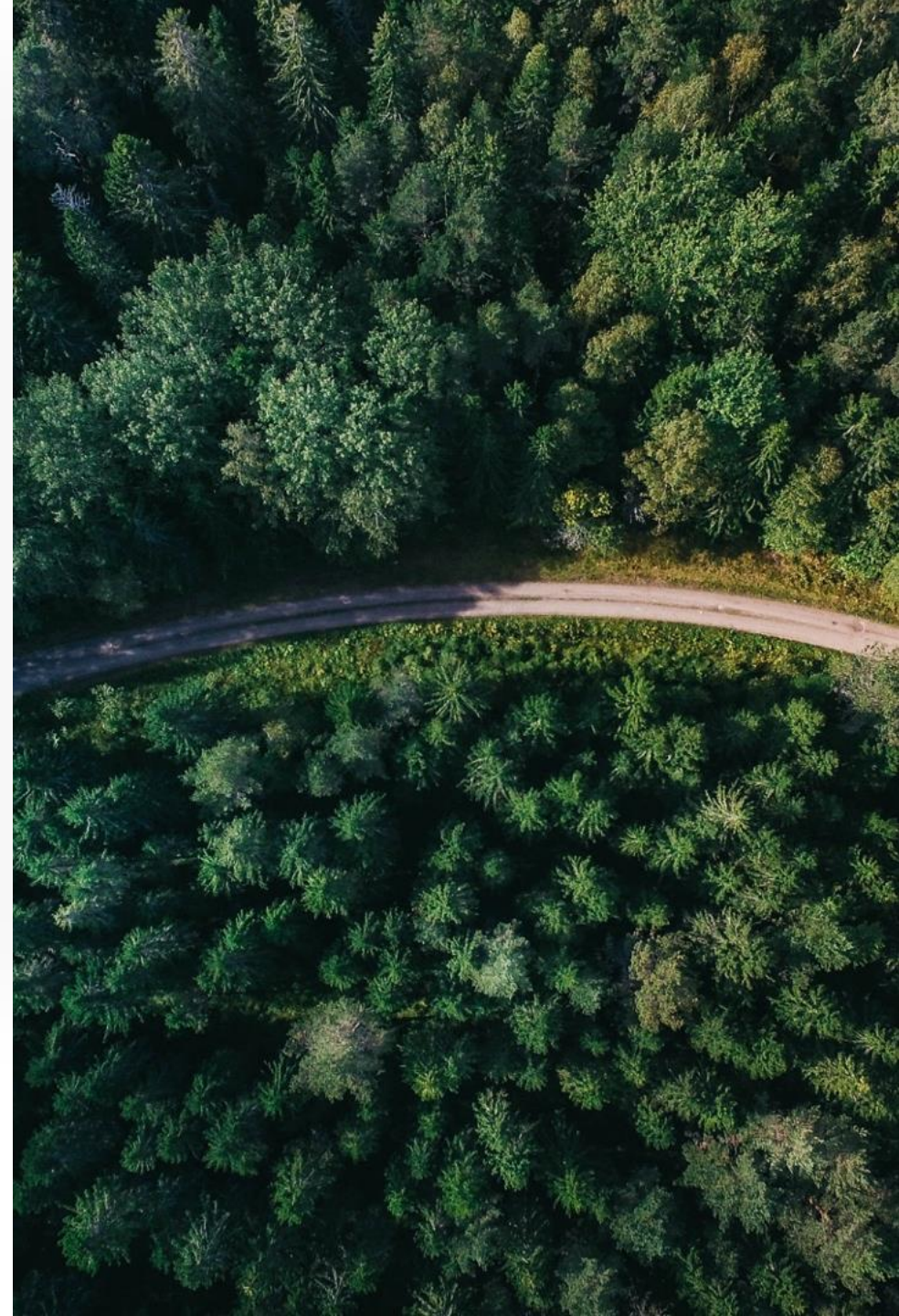
Global Christ-like Expression

An Interview with Steve Woods

Mark 3:7-19

Mark 3:7-10

⁷ Jesus withdrew with his disciples to the lake, and a large crowd from Galilee followed. ⁸ When they heard about all he was doing, many people came to him from Judea, Jerusalem, Idumea, and the regions across the Jordan and around Tyre and Sidon. ⁹ Because of the crowd he told his disciples to have a small boat ready for him, to keep the people from crowding him. ¹⁰ For he had healed many, so that those with diseases were pushing forward to touch him.





The **attraction** of Jesus and
his way:



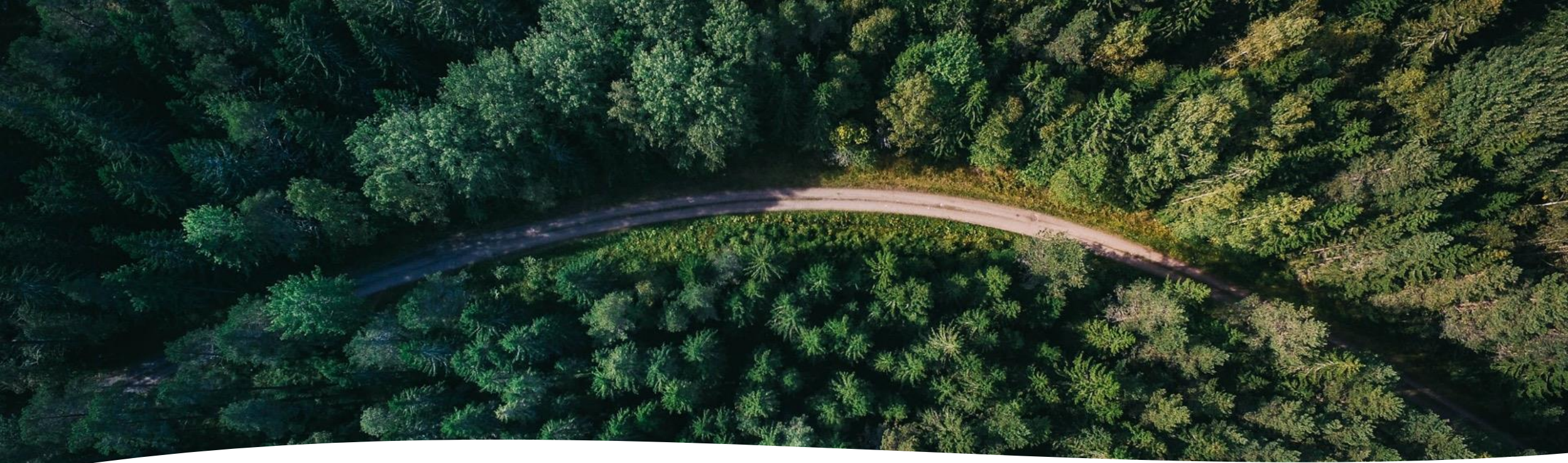
The **attraction** of Jesus and his way:

- How is BWA, shaped by the way of Jesus, **uniquely attractive** to us and to others?



The **attraction** of Jesus and his way:

- How is BWA, shaped by the way of Jesus, **uniquely attractive** to us and to others?
- How does BWA discern where to best direct their missional efforts when there is **so much need**?



QUESTION FOR PERSONAL REFLECTION

What characteristic makes you attractive as a follower of Jesus in your workplace, home or community group?

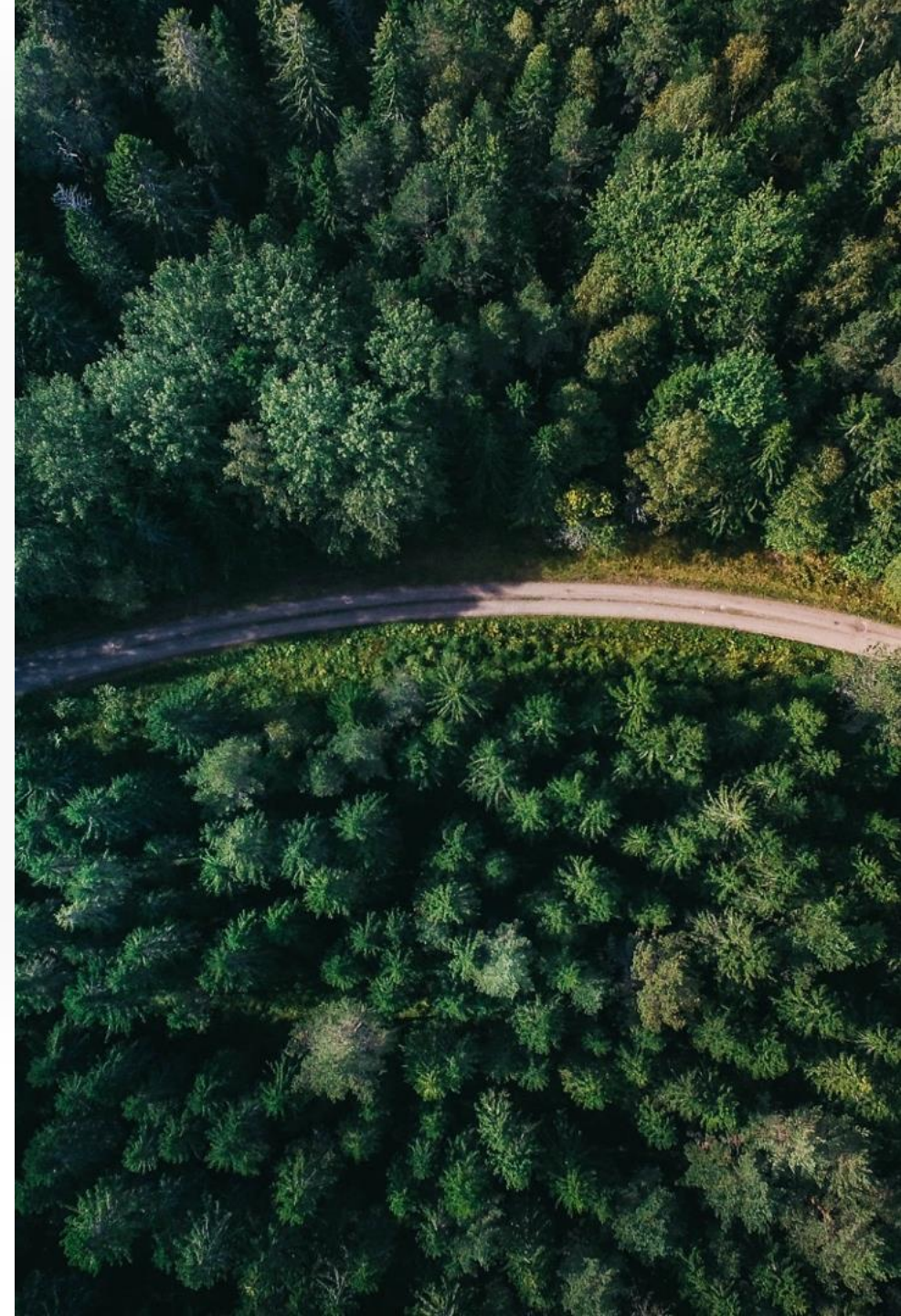
Mark 3:13-19

¹³ Jesus went up on a mountainside and called to him those he wanted, and they came to him.

¹⁴ He appointed twelve that they might be with him and that he might send them out to preach

¹⁵ and to have authority to drive out demons.

¹⁶ These are the twelve he appointed: Simon (to whom he gave the name Peter), ¹⁷ James son of Zebedee and his brother John (to them he gave the name Boanerges, which means “sons of thunder”), ¹⁸ Andrew, Philip, Bartholomew, Matthew, Thomas, James son of Alphaeus, Thaddaeus, Simon the Zealot ¹⁹ and Judas Iscariot, who betrayed him.





Jesus appointing and
empowering others:



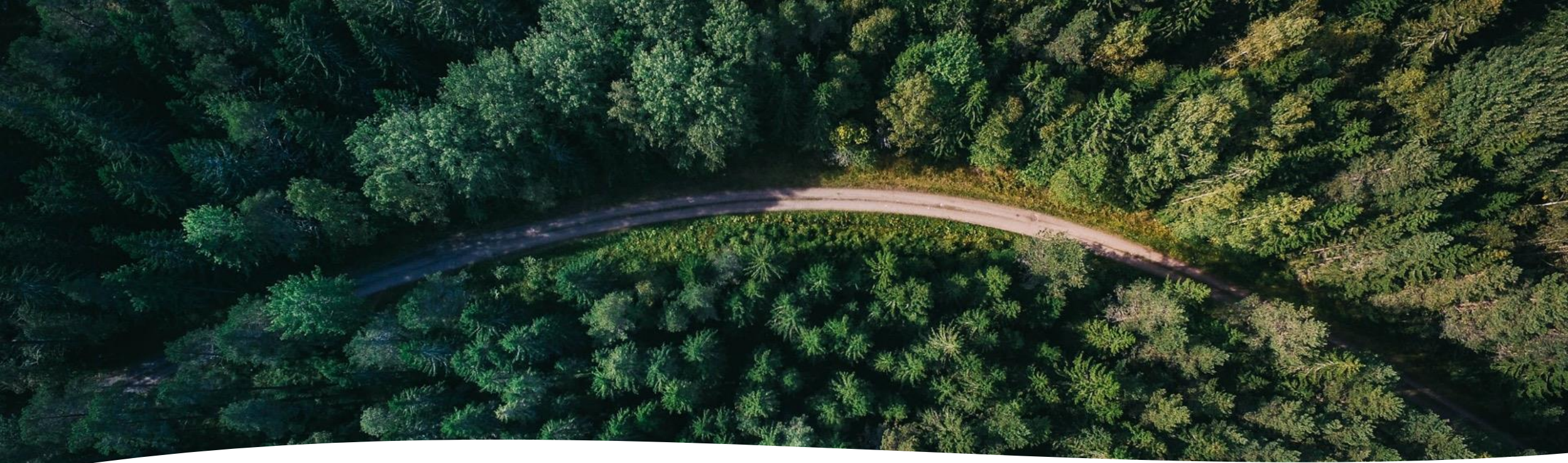
Jesus appointing and **empowering** others:

- To avoid unhealthy dependency, in what ways does BWA adopt an **empowering approach** to mission?



Jesus appointing and **empowering** others:

- To avoid unhealthy dependency, in what ways does BWA adopt an **empowering approach** to mission?
- Beyond programs, what is the significance of personal **presence** in those places BWA works?



QUESTION FOR PERSONAL REFLECTION

Who in your own story encouraged and empowered you in a significant way?